

OPTX 0.48W 2LED



- Ideal for illuminating light boxes and three-dimensional letters with a depth of 110-200 mm. Thanks to optics and a new chip, it focuses light on the surface of the sign, creating increased illumination of the sign.
- An economical solution to achieve the most effective illumination of the product.

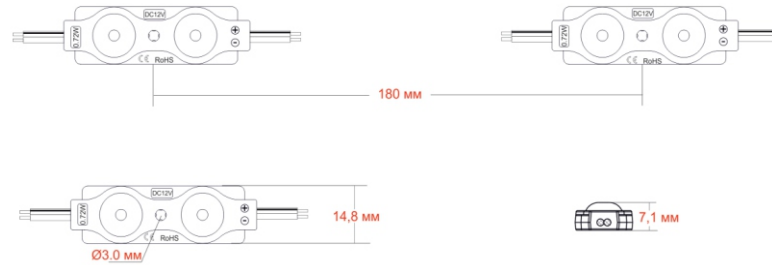
Installation:

- Light boxes and volumetric letters
- The recommended installation depth is 110-200 mm

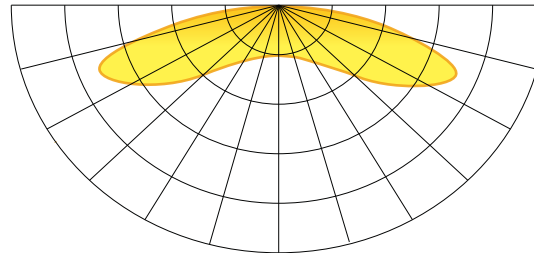
Features and benefits:

- Special polycarbonate lens with light transmission > 88%
- Maximum temperature Tj 65°C
- Luminance drop < 20% within three years
- CRI greater than 70
- High level of protection Ip65
- Warranty 3 years

Installation size and step



Light scattering angle



Scattering angle: 160°

Technical information

Available colors:

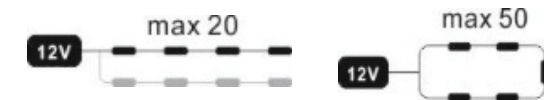
Power: 0.48W

Light flux: 52 lm

Crystal type	2835
Operating voltage	12V DC
Glow temperature	<input type="radio"/> 7000 K
Scattering angle	160°
Protection class	IP 65
Working temperature	-25 +60 °C

Packaging information

Packaging	In a chain	In the package	In a box
Number	20 PCS	200 PCS	2400 PCS
Weight	0,08 kg	0,7 kg	16,2 kg



Illumination table

Installation depth	luminosity	Installation step by centers of modules	Number per 1 m ²	Power per 1 m ²
110 mm	2620 lx	140 mm	49 PCS	24 W
130 mm	1880 lx	160 mm	36 PCS	17 W
150 mm	1500 lx	180 mm	25 PCS	12 W
200 mm	1400 lx	180 mm	25 PCS	12 W