



Flexible neon 220V

Features and benefits

- The housing is molded in one go, the IP65 protection class can be used outdoors
- Direct connection to the 220V network
- LED light source, low energy consumption, long service life
- Soft and uniform illumination without dips
- Soft and uniform illumination without dips
- CE, ROHS certificates



Parameters

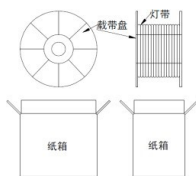
Name	LED NEON		
Type	PL-A-2835W-120D-220V	PL-B-2835W-120D-220V	PL-B-5050RGB-60D-220V
Material	PVC	PVC	PVC
Size	8*16mm	14*26mm	14*26mm
PCB	6mm	6mm	10mm
LED type	SMD2835	SMD2835	SMD5050
LED qty	120	120	120
Colors	3000K/4500K/6500K/R/G/B	3000K/4500K/6500K/R/G/B	RGB
Warranty	2 years	2 years	2 years
High-voltage	AC110V/120V/220V/240V	AC110V/120V/220V/240V	AC110V/120V/220V/240V
CRI	Ra≥80	Ra≥80	/
Power 1Led	0.2W	0.2W	0.2W
Power 1 m	6W±0.3W	6W±0.3W	≤12W
Working t	-25~+45	-25~+45	-25~+45
Multiplicity of	0.5M/1M	0.5M/1M	0.5M/1M
Quantity in a	50M	50M	50M
Gross weight	9.6KG	20.5KG	21.5KG
Box size	33.5*33.5*14.5cm	33.5*33.5*28mm	33.5*33.5*28mm
Bulk weight	0.0162m ³	0.0314m ³	0.0314m ³

Fields of application

- lighting of houses as decoration
- contour lighting of buildings
- modeling of various figures
- landscape design



Packaging



Packing coil 50M/roll/box

Accessories



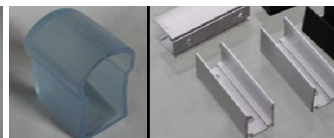
Controller



Power cord

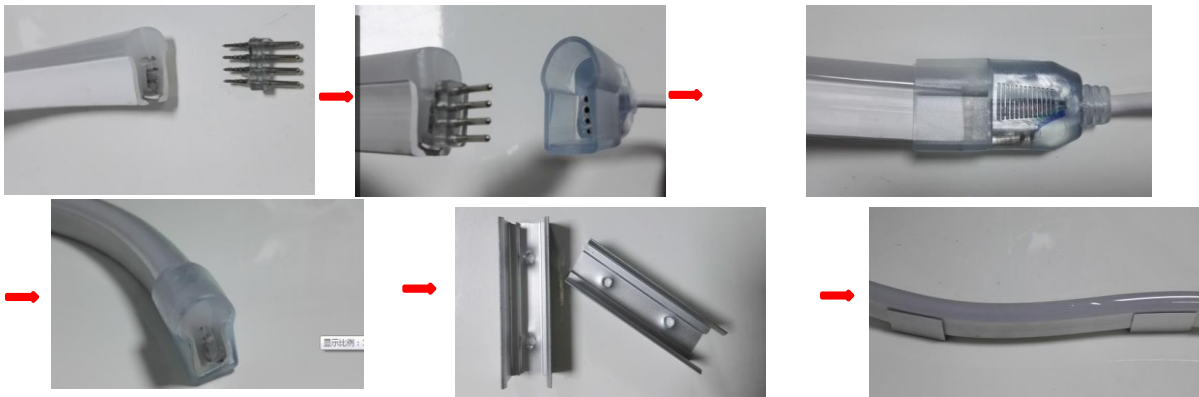


Connecting terminals and plugs



Profile

Installation method



* in some cases, there is a discrepancy between the connecting terminals and power wires on the neon. Make sure that the legs of the terminal enter strictly in the center of the current-conducting wires on the neon. If this condition is not met, squeeze the neon from above and below so that the wires become closer to each other and insert the connecting terminal

Safety measures

1. Each light strip is connected with a rectifier bridge plug and plug, which can be easily inserted into the outlet. Please check the power supply of the device before use, make sure that the power line is not overloaded and the circuit has a protective device.

For example, the outlet has a fuse or leakage relay. The voltage drop should be $\pm 5\%$ of the nominal value.

2. If you need a non-standard length, you should cut the neon at the indicated places by 0.5/1 meter. Be careful after cutting, the cut place should be sealed"

waterproof insulating glue to avoid electric shock. We are not responsible for failure to take precautions. We do not recommend cutting neon in places not intended for this. If you need neon with a non-standard cut rate, let us know in advance

3. It is not allowed to twist the neon, because it may damage the internal power line. Do not bend the neon less than 45 degrees and with a radius less than 60 mm. When used indoors, precautions should be taken to avoid fire, electric shock, or other injury.

4. For stable operation, the place of installation should be well ventilated. Do not allow neon to touch each other. It is dangerous!

5. Avoid sagging and impacts during and after installation. Flexible neon must be securely fixed

6. The end of the neon must be closed with a plug. When used outdoors with the addition of a silicone adhesive sealant (for example Soudal FIX ALL Flexi) to avoid short circuits and moisture. It is sealed like the end of the neon, and the connection point with the 220V adapter. For better adhesion of the glue-sealant, treat the seat of the neon and the plug (adapter) with sandpaper with P2500 grit. Do not immerse in water.

7. If the light bar is damaged, please turn off the device immediately and do not use it to avoid danger.

8. The product is not a children's toy. Mount in places inaccessible to children. No use in pools and other bodies of water