

Mini 2



- Ideal for small three-dimensional letters with a depth of 40 - 70 mm.
- Ultra-thin structures with a complex shape.

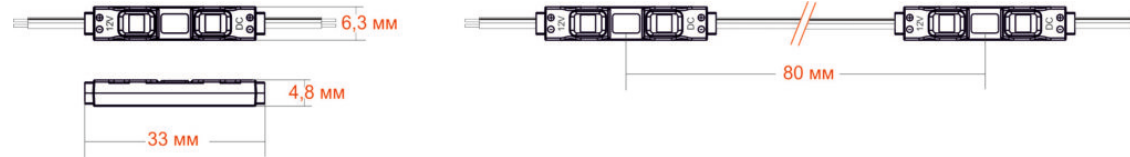
Installation:

- Complex shapes and three-dimensional letters
- The recommended installation depth is 40-70 mm

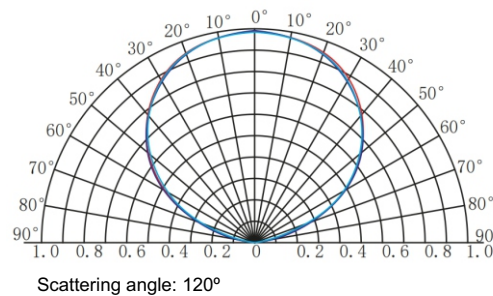
Features and benefits:

- Small size 33*6.3*4.8mm
- Maximum temperature Tj 75°C
- CRI over 70
- High level of protection Ip65
- Warranty 2 years

Installation size and step



Light scattering angle

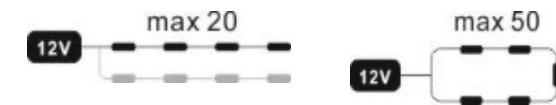


Technical information

Available colors:	<input type="radio"/>	<input checked="" type="radio"/>
Power	0,3W	0,3W
Light flux	30 lm	9 lm
Crystal type	3528	
Operating voltage	12VDC	
Glow temperature	○ 7000 K	
Scattering angle	120°	
Protection class	IP 65	
Working temperature	-25 +60 °C	

Packaging information

Packaging	Weight	In the package	In a box
Number	20 PCS	1000 PCS	10000 PCS
Weight	0,1 kg	1,5 kg	22,85 kg



Illumination table

Installation depth	luminosity	Installation step by centers of modules	Number per 1 m ²	Power per 1 m ²
50 mm	8100 lx	40 mm	625 PCS	188 W
60 mm	5400 lx	60 mm	278 PCS	83 W
70 mm	3700 lx	70 mm	196 PCS	59 W